



Coimisiún na Scrúduithe Stáit  
State Examinations Commission

4701

LEAVING CERTIFICATE EXAMINATION 2003

M50

EXAMINATION NUMBER



**MUSIC – HIGHER LEVEL**  
**COMPOSING – CORE (100 marks)**  
**THURSDAY 19 JUNE – AFTERNOON, 2.00 TO 3.30**

STAMPA AN IONAIÐ  
(Centre Stamp)

**DON SCRÚDAITHEOIR**

Móriomlán na  
Marcanna

CEIST	MARC
1	
2	
3	
4	
5	
6	
<b>MÓRIOMLÁN</b>	
<b>GRÁÐ</b>	

---

**INSTRUCTIONS TO CANDIDATES**

- Write your examination number, as required, in the box above.
  - Answer the questions in the spaces provided in this question-answer book.
  - You may use the spaces at the beginning, middle and end of the question-answer book for rough work.
-

**ROUGH WORK**

The page contains ten blank musical staves, each consisting of five horizontal lines. The staves are arranged vertically down the page, with a consistent gap between each staff. The lines are black and the background is white.

SECTION A – MELODY COMPOSITION (40 marks)

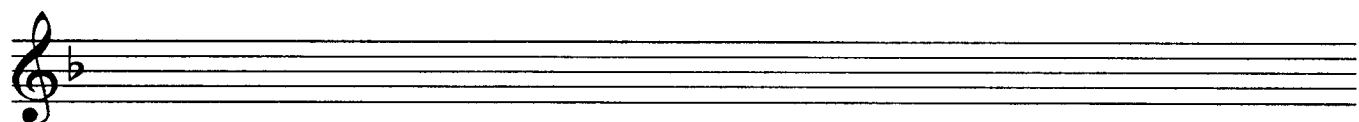
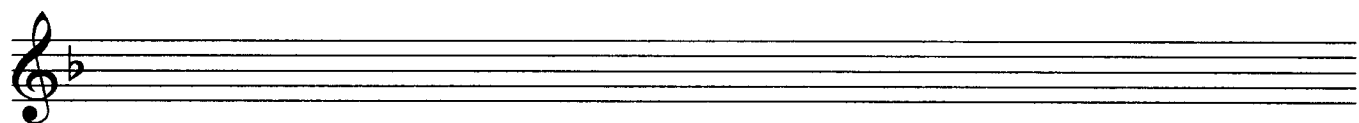
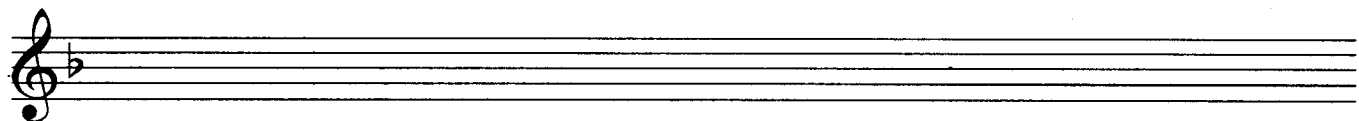
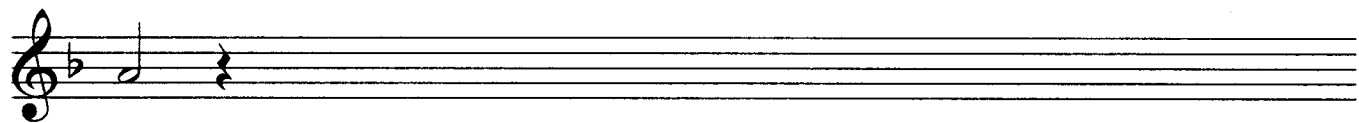
Answer ONE QUESTION ONLY in this section: Q1 or Q2 or Q3

**Q1 CONTINUATION OF A GIVEN OPENING**

- Continue the opening below to make a 16-bar melody.
- Include a modulation to the dominant at a suitable point.
- Add appropriate performing directions (phrasing and/or articulation and dynamics) to the melody.
- Choose a suitable instrument for your melody from the following list:

violin     cello     horn     flute     trombone     bassoon     trumpet

Moderato (at a moderate speed)



## Q2 SETTING MUSIC TO A GIVEN TEXT

Here is an excerpt from *The Lay of the Last Minstrel* by Sir Walter Scott.

Breathes there the man, with soul so dead,  
Who never to himself hath said,  
This is my own, my native land!  
Whose heart hath ne'er within him burned.

- The opening line has been set to music below.
- Set the remaining words to make a melody of 16 bars. (You may exceed this number of bars, and include a modulation, if you wish).
- Add appropriate performing directions, namely, phrasing and dynamics.

**Andante (at a walking pace)**

Breathes there the man, with \_ soul so dead,

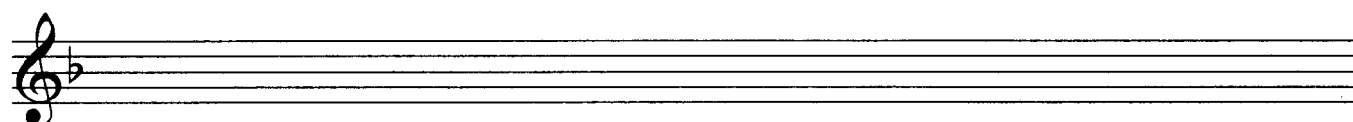
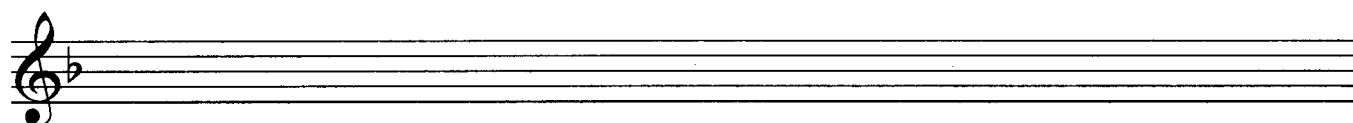
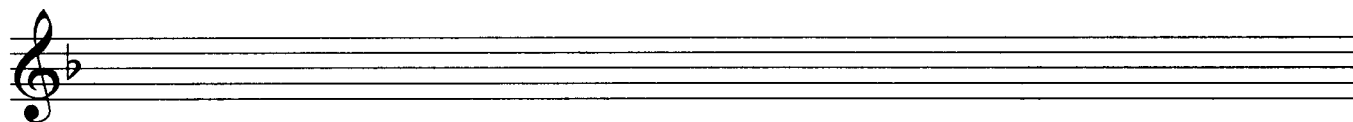
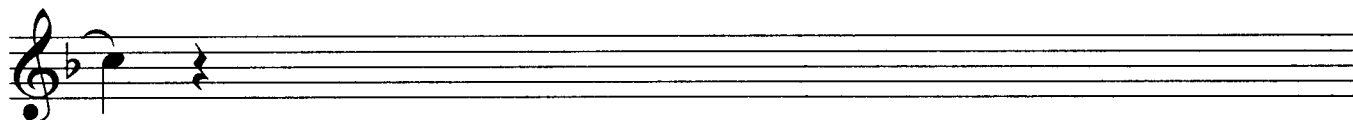
### Q3 COMPOSING TO A GIVEN DANCE RHYTHM OR METRE OR FORM

The opening phrase of a gavotte is given below.

- Continue the given opening to make a 16-bar melody.
- Use the form AA' BB'.
- Include a modulation to the dominant.
- Add appropriate performing directions (phrasing and/or articulation and dynamics).
- Choose a suitable instrument for your melody from the following list:

violin     clarinet     trumpet     oboe     recorder     cello     horn

**Allegro (quickly)**



(40)

**SECTION B – HARMONY (60 marks)**

Answer ONE QUESTION ONLY in this section: Q4 or Q5 or Q6

**Q4 COMPOSING MELODY AND BASS NOTES FROM A SET OF CHORDS**

**PREPARATORY WORK**

- Plot the chords available in the key of D minor, either in the chord bank grid *or* on the stave below.

Notes of chord	A F D	B $\flat$ G E	C $\sharp$ A F				G E C $\sharp$
Chord symbol	Dm	E $\dim$	F $\text{aug}$				C $\sharp\dim$
Roman numeral	i	ii	III	iv	V	VI	vii

i      ii      III      iv      V      VI      vii

**ROUGH WORK**

Four sets of empty musical staves for rough work, each consisting of a treble clef staff and a bass clef staff.

- Study the following piece of music.
- Using the chords indicated, compose melody and bass notes to complete the piece in the given style.

**Allegretto (fairly quickly)**

Chords: Dm, Dm/F, Gm, Dm/F, Gm, Gm/B $\flat$ , A, A/C $\sharp$

Chords: Dm, B $\flat$ , Gm, Gm/B $\flat$ , Dm/A, A7, B $\flat$

Chords: Dm, Gm, A7, A7/G, Dm/F, Dm, Gm/B $\flat$ , Gm

Chords: A, A/C $\sharp$ , Dm, B $\flat$ , Dm/A, A7, Dm

# Q5 COMPOSING BASS NOTES AND CHORD INDICATIONS TO A GIVEN TUNE

## PREPARATORY WORK

- Plot the chords available in the key of D major, either in the chord bank grid *or* on the staff below.

Notes of chord	A		C#				G
	F#		A				E
	D		F#				C#
Chord symbol	D		F#m				C#dim
Roman numeral	I	ii	iii	IV	V	vi	vii

I    ii    [iii]    IV    V    vi    [vii]

## ROUGH WORK

Four sets of empty musical staves for rough work, each consisting of a five-line staff with a treble clef and a key signature of two sharps (F# and C#).



Study the following song and insert suitable bass notes and chord indications in the style of the given opening.

- Do *not* repeat the same chord *in the same position* in adjacent boxes.
- You may use chord symbols or Roman numerals, but not both.
- If you choose Roman numerals, use *lower case* for *minor* chords.

Moderato (at a moderate speed)

The image shows a musical score for piano in D major, 4/4 time, with a tempo marking of Moderato. The score consists of six systems of music. Each system has a grand staff with a treble clef and a bass clef. The first system includes chord boxes above the treble staff:  $I$  over  $D$  in the first measure,  $Ib$  over  $D/F\#$  in the second measure, and an empty box in the third measure. The remaining systems have empty boxes above the treble staff. The melody is written in the treble staff, and the bass staff is left empty for the student to write in their own accompaniment. The key signature has two sharps (F# and C#), and the time signature is 4/4. The score ends with a double bar line at the end of the sixth system.

# Q6 ADDING A COUNTERMELODY OR DESCANT AND CHORDAL SUPPORT TO A GIVEN TUNE

## PREPARATORY WORK

- Plot the chords available in the key of G major, either in the chord bank grid *or* on the staff below.

Notes of chord	D B G		F# D B				C A F#
Chord symbol	G		Bm				F#dim
Roman numeral	I	ii	iii	IV	V	vi	vii

I    ii    [iii]    IV    V    vi    [vii]

## ROUGH WORK

Four sets of empty musical staves for rough work, each consisting of a five-line staff with a treble clef and a key signature of one sharp (F#).

- Study the following piece of music.
- Insert suitable chord indications in the boxes provided and continue the descant part in the given style to complete the piece.
- You may use either chord symbols or Roman numerals but not both.
- If you choose Roman numerals, use *lower case* for *minor* chords.
- Do not repeat the same chord *in the same position* in adjacent boxes.

**Andante (at a walking pace)**

I  
G

V  
D

I  
G

IV  
C

V  
D

IV  
C

# ROUGH WORK

This page contains ten sets of blank musical staves, each consisting of five horizontal lines. The staves are arranged vertically down the page, providing space for rough work or practice.

# ROUGH WORK

The page contains 12 blank musical staves, each consisting of five horizontal lines. These staves are arranged vertically down the page, providing space for rough work or practice.

# ROUGH WORK

Blank lined paper for rough work, consisting of 12 sets of horizontal lines.

# ROUGH WORK

Blank lined paper for rough work, consisting of 12 sets of horizontal lines.

**BLANK PAGE**